

Richard Edmund Barrett

(1842–1911)

US Navy & Army Veteran
Iarshaighdiúir le Cablach agus le hArm Mheiriceá



Barrett homestead at Cloonmore Rosscahill. The property was also once occupied by Frank Perse, brother of Lady Gregory
Photo Courtesy David Barrett

Born at Cloonmore, Rosscahill, Richard Edmund Barrett (Dick Ned) left for the United States in 1862, and enlisted as a landsman in the Union Navy in New York.

During his time in the Union Navy, Richard served on board the *USS New Berne* and *USS Nippon*, where he saw action in the US Civil War. After his transfer to the *USS Wachusett*, he saw service in China, Korea, and Japan, before being discharged.

This was not the end of his military career. Richard also enlisted as a private in the US Infantry and, after service there, in the US Cavalry, where he served in Alabama and at Fort Griffin, Texas. He died in New York.

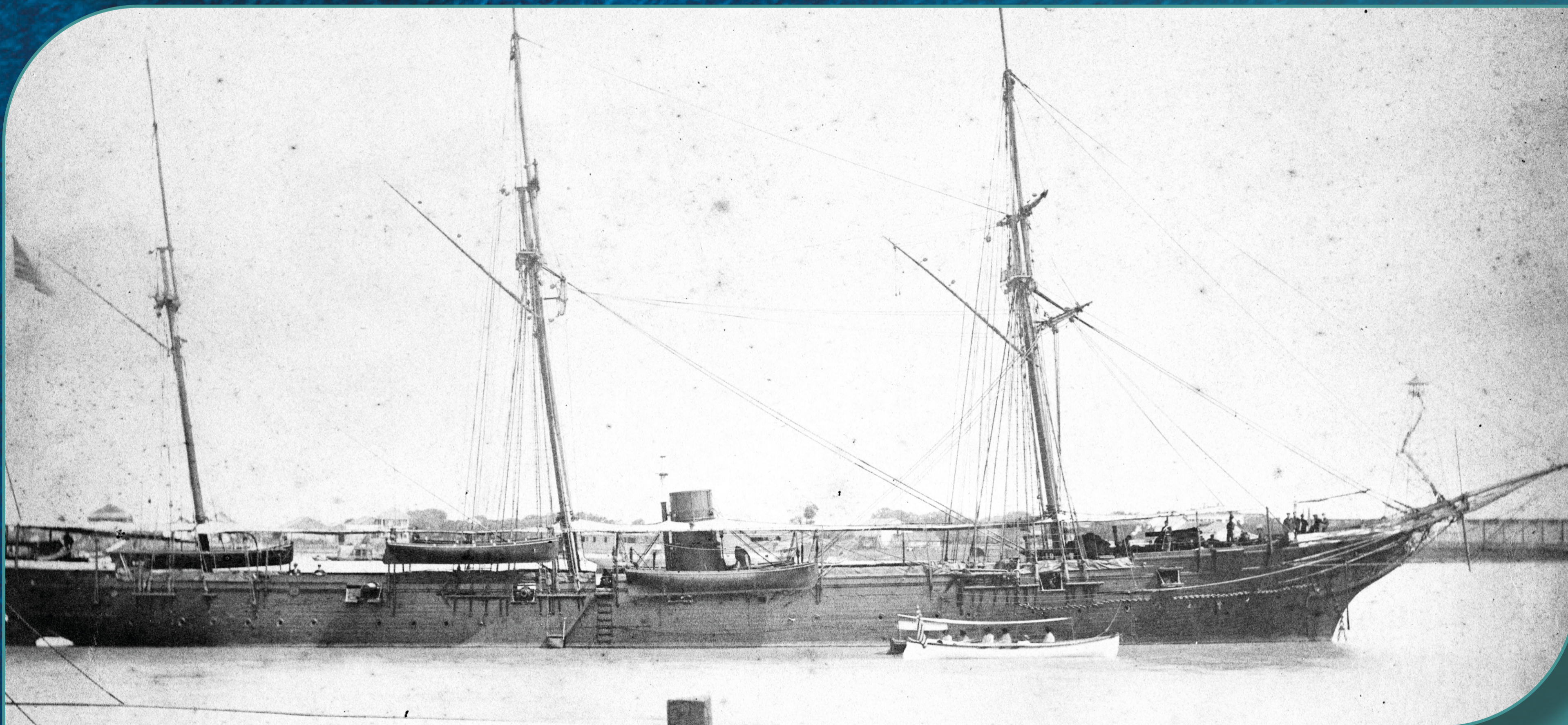
I gCluain Mhór, Ros Cathail, a rugadh Richard Edmund Barrett (Dick Ned). D'imigh sé chuig na Stáit Aontaithe i 1862, agus liostáil sé ina chaslóir le Cabhlach an Aontais i Nua-Eabhrac.

Le linn a thréimhse le Cabhlach an Aontais, bhí Richard ar dualgas ar bord an *USS New Berne* agus an *USS Nippon*, mar a raibh sé i mbun trodaíochta i gCogadh Cathartha SAM. Aistriodh ansin é chuig an *USS Wachusett*, agus bhí sé i mbun dualgais sa tSín, sa Chóiré, agus sa tSeapáin, sular scaoileadh amach é.

Níorbh in é deireadh a ghairme beatha míleata. Liostáil Richard ina shaighdiúir singil le Saighdiúirí Coise na SA agus, tar éis an dualgais sin, le Marcshlua sna SA, áit a raibh sé ar dualgas in Alabama agus in Fort Griffin, Texas. Fuair sé bás i Nua-Eabhrac.



Find Out More



The USS Wachusett at anchor at Shanghai, 1868
Photo Courtesy U.S. NAVAL HISTORICAL CENTER, Public domain, via Wikimedia Commons



A commissioned image of a carving on Richard Barrett's tombstone. This symbol is common on memorials of former sailors or bluejackets
Photo Courtesy David Barrett



MÚSAEM CATHRACH NA GAILLIMHE
GALWAY CITY MUSEUM

